



# GI Business Database Solutions

## Assets Database

---

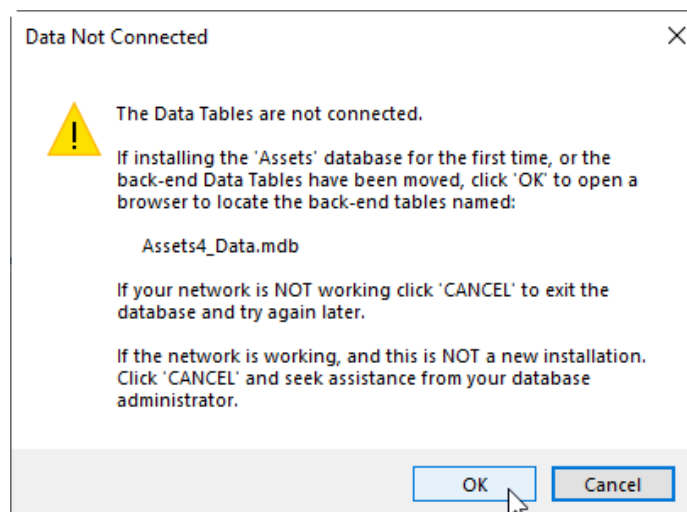
### QUICK START INSTRUCTIONS

If you prefer more detailed installation instructions refer to the [Install Instructions.pdf](#)

**Do NOT** install any part of the Assets database in Dropbox, P-Cloud, Google Drive, or similar virtual drives. Doing so **WILL** result in data corruption, and damage the database beyond the ability to recover your data.

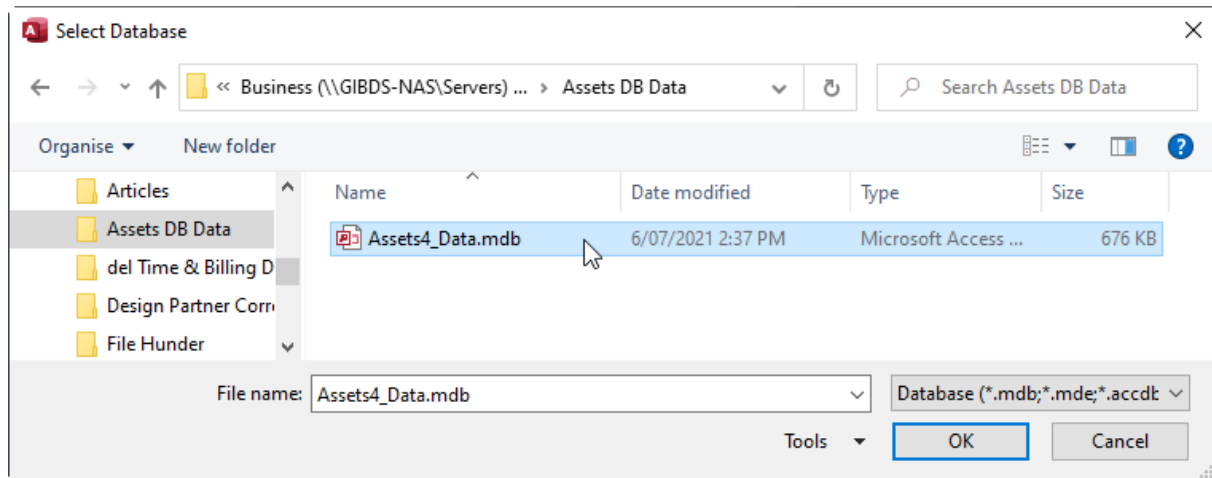
---

1. **Extract all the files** from the downloaded zip file to a folder on your PC or network. *(If you are setting up the front-end software on a second or subsequent PC on the same network, go to step 5)*
2. **For Multi-User Access:** Create a new shared folder for the data tables on your network or NAS. All users of the software will require full read/wrote/delete permissions in this folder. Move the data file named **Assets4\_Data.mdb** into the folder.
3. **For Single User access:** If you have no network, create a new folder on your local PC hard drive. (Usually in your 'Documents' folder). Move the database data file (**Assets4\_Data.mdb**) into the folder.
4. **Add the folder containing the database data tables to your regular backup regime.**
5. Install the User Interface software on each user's PC hard drive. To install, locate and double click the double-click the file **Asset4\_Setup.exe** and run the software installer.
6. During installation follow the on-screen prompts. We recommend accepting the default installation location option. For additional information refer to the [Install Instructions pdf](#) in the extracted file.
7. Start the software using the desktop icon; you will be prompted for the location of the data tables.



8. On the pop-up message, click the 'OK' button, then use the windows browser to navigate to the folder containing the Database Data Tables.

9. Double click the shared database data file named 'Assets4\_Data.mdb'.



10. The Windows browser will close. Wait a few moments whilst the back-end tables file is linked, and the database main form opens.

**See 'Install Instructions' PDF for more detailed information instructions, Warranty and End User License conditions and information on upgrading GI Assets Database version 3.01 data to version 4.00 format.**